

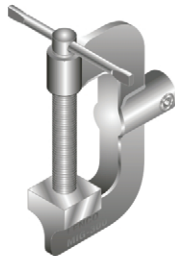


GROUND CLAMPS

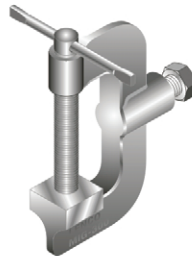
MIG-300 Ground Clamps

• *Designed Especially for MIG Welding • Reduce Voltage Drop*

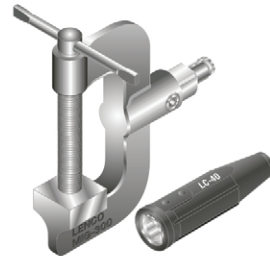
MIG-300



MIG-300-50



MIG-300-D



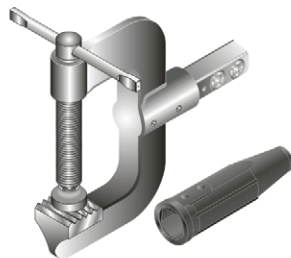
LENCO's **MIG-300/MIG-600** ground clamps are designed especially for the MIG welding process. Their powerful bite and swivel pad allow for low resistance ground connections. They have a full two-inch opening and a copper coated steel pressure screw. The 5/16" (7.9mm) copper coated steel "T" handle makes it easy to apply maximum pressure.

Model	Item Code No.	Amp Capacity	Cable Capacity	Type of Cable Connection	Weight	Jaw Opening	Throat Depth
MIG-300	02075	300	No. 1/0 thru No. 2/0 (50-70mm ²)	Single Oval-Point Screw	23 oz. (648.5g)	2" (51mm)	1-3/4" (44mm)
MIG-300-50	02077	300	No. 1/0 thru No. 2/0 (50-70mm ²)	1/2 - 13	23 oz. (648.5g)	2" (51mm)	1-3/4" (44mm)
MIG-300-D	02082	300	No. 1/0 thru No. 2/0 (50-70mm ²)	Detachable Cable Connection	33 oz. (932.7g)	2" (51mm)	1-3/4" (44mm)

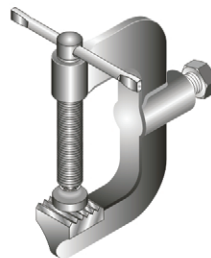
MIG-600 Ground Clamps

• *Designed Especially for MIG Welding • Reduce Voltage Drop*

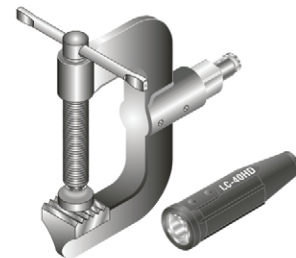
MIG-600



MIG-600-50



MIG-600-D



Model	Item Code No.	Amp Capacity	Cable Capacity	Type of Cable Connection	Weight	Jaw Opening	Throat Depth
MIG-600	02070	600	No.3/0 thru No. 4/0 (70-95mm ²)	Two Oval-Point Screws	56 oz. (1.6kg)	2" (51mm)	2-1/8" (54mm)
MIG-600-50	02071	600	No.3/0 thru No. 4/0 (70-95mm ²)	1/2 - 13	56 oz. (1.6kg)	2" (51mm)	2-1/8" (54mm)
MIG-600-D	02081	600	No.3/0 thru No. 4/0 (70-95mm ²)	Detachable Cable Connection	62 oz. (1.8kg)	2" (51mm)	2-1/8" (54mm)

Item Code No.	Description
05260	Quick Detachable Female End Only - MIG-300-D, MIG-600-D and G-50
05261	Quick Detachable Male End Only - MIG-300-D, MIG-600-D and G-50
05345	Insulating Cover (Black) Standard Cable Fitting - MIG-600
02079	1/2 - 13 Screw